



in [Tahoe Quarterly Summer 2017](#) by [David Basker](#) | Photography by David Basker

### RELEARNING THE PRACTICE OF THE WILD

I was fortunate enough to grow up the child of two parents who hated television and loved adventure. When I was an infant we moved to a cowboy ranch in rural Oklahoma, where my dad punched steers along the Canadian River and shot jackrabbits for dinner. My mom still likes to say that the 100-year-old log cabin we lived in was so loosely timbered that “you could fly a kite in the living room.”

We moved back to California when I was still young and one of our yearly rituals was camping deep in the redwoods of Big Sur. On these trips, my dad would take my brother and me on long, trail-less hikes into the steep canyons and over the dramatic waterfalls of the wild feeder creeks that formed the headwaters of the Little Sur River. It was awe-inspiringly wild country, the kind of wilderness that rarely sees another human for years on end. [Continue Reading...](#)



ASPEN LEAF  
INTERIORS  
MARIO DECKER  
BETTY SCOTT  
OLIVIA CRISONE



HEATHER LAKE, JUST AFTER LAKE ALGONA, IS ONE OF MANY SCENIC SPOTS ON THE PCT. PHOTO BY BRIAN WALKER

### CHRONICLING AMERICA'S WILDERNESS TRAIL

in [Tahoe Quarterly Summer 2017](#) by [The Hennessey](#) | Photography by Brian Walker

The Pacific Crest Trail (PCT) meanders 2,650 miles from the barren desert near Mexico to the lush forests of Washington at the Canadian border. While over 40 million people live within a short drive of this mountainous trail, those who take on the challenge of hiking the entire PCT will pass through 50 wilderness areas and experience the joy and challenge of true solitude.

Released last fall, *The Pacific Crest Trail: Exploring America's Wilderness Trail*, by Mark Larabee and Barney Scout Mann, is a 330-page coffee table book that takes readers on a visually stunning ride along this famous alpine route. [Continue Reading...](#)

**UNLIMITED POSSIBILITIES.**  
LOOKING FOR A CLEAN, CONTEMPORARY MODERN STYLE? ANDERSEN HAS SOLUTIONS TO MEET YOUR NEEDS.

**E-SERIES**  
[anderseninteriors.com/e-series](#)

**WEILAND**  
[weilandinteriors.com](#)

Sean Barry, Territory Sales Representative  
**775.771.5938**  
[sean.barry@andersen.com](mailto:sean.barry@andersen.com)



### ROCKY IMPRESSIONS

in [Mountain Home Awards 2017](#) Mountain Homes by [Julia Zirbel](#) | Photography by Yaseo Fox

What's an architect to do given a two-story-tall mound of boulders in the middle of a homesite? For Dennis Zirbel, the answer was obvious: Take full advantage of it.

"Not many homesites have that kind of a natural feature to work with," the Truckee-based architect says of Martis Camp lot 15, a nearly two-acre parcel located off the fourth hole of the golf course. "So we basically wrapped the building around that rock outcropping."

Built as a spec house, Dennis and his wife, interior designer Natalie Zirbel, planned the six-bedroom, 5,137-square-foot home to appeal to a wide range of potential buyers. They took inspiration from the impressive granite fortress that dominates the lot, incorporating the shades and textures of the rocks throughout the exterior and interior of the home. [Continue Reading...](#)

# CITY OF DUST: THE EVOLUTION OF BURNING MAN

**JULY 1, 2017 – JANUARY 7, 2018**

For the first time ever, explore the remarkable story of how the legendary Nevada gathering known as Burning Man evolved from humble countercultural roots into the world-famous convergence it is today. Never-before-seen photographs, artifacts, journals, sketches, and notebooks reveal how this experimental desert city came to be—and how it continues to evolve.

THIS EXHIBITION WAS REALIZED THANKS TO GENEROUS GIFTS FROM:  
**LEAD GIFT** Bentley Foundation MAJOR GIFT Reno-Sparks Convention & Visitors Authority  
 SUPPORTING GIFTS Maureen Mullarkey and Steve Miller; Eleanor and Robert Prager;  
 The Private Bank by Nevada State Bank; Volunteers in Art of the Nevada Museum of Art  
 ADDITIONAL GIFTS City of Reno; Jan and David Hardie

THIS EXHIBITION WAS ORGANIZED BY THE NEVADA MUSEUM OF ART.  
 MANY OF THE ITEMS INCLUDED ARE DRAWN FROM THE ARCHIVE COLLECTIONS OF  
 THE CENTER FOR ART + ENVIRONMENT AT THE NEVADA MUSEUM OF ART.

**NEVADA MUSEUM OF ART**

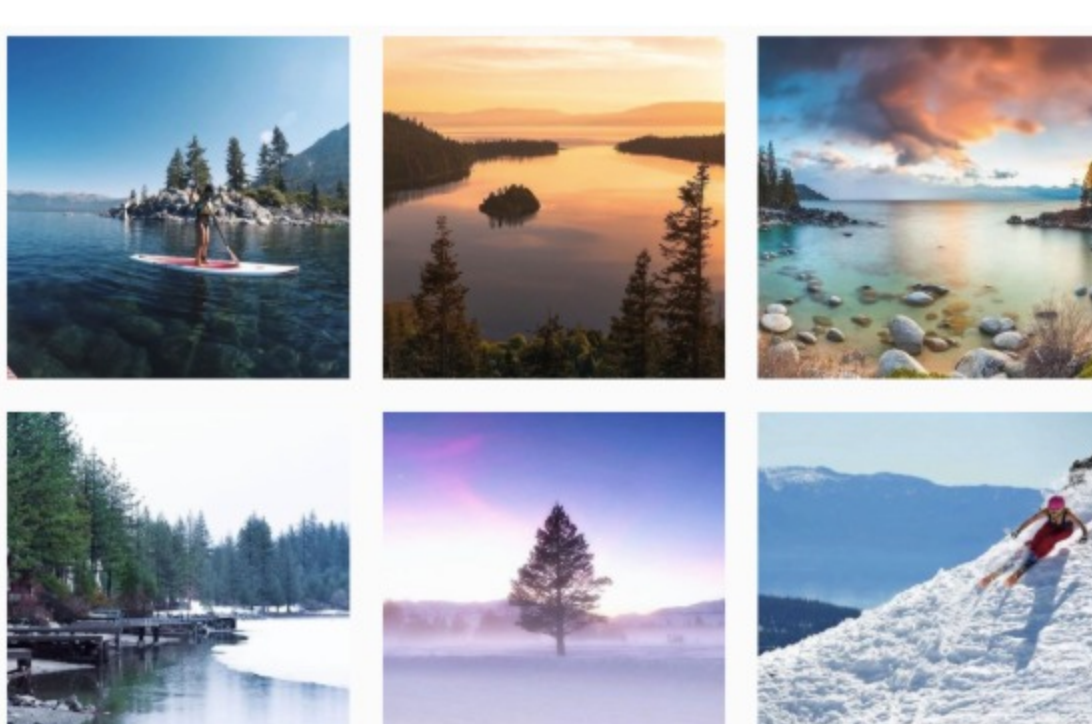
Donald W. Reynolds Center for the Visual Arts | E. L. Wiegand Gallery  
 160 West Liberty Street in downtown Reno | 775.329.3333 | [nevadart.org](#)

Custom home building with a history of success and exceptional service from design to finish.

**LOVERDE BUILDERS**

330-581-5533 | [info@loverdebuilders.com](mailto:info@loverdebuilders.com) | P.O. Box 5835, Tahoe City, CA 96145 | [www.loverdebuilders.com](http://www.loverdebuilders.com)

CONSTRUCTION ARCHITECTURE DEVELOPMENT



TAG US ON INSTAGRAM AND GET YOUR PHOTO FEATURED @TAHOEQUARTERLY

SUMMER 2017 Burning Man Evolution

# TAHOE

QUARTERLY

*Water*  
MASTER CHALLENGE

FIND US ON FACEBOOK [HERE](#)